

Form to complete and return by mail to contact@palamatic.fr or by fax to +33 (0)2 99 86 08 10

To make sure your data is taken into account, please save the document on your desktop before filling it in.

Company	Date		
Contact name	Project ref.		
Position	Phone		
Address	Fax		
City	E-mail		
Country			
Sector of activity	Food & Feed	Chemical industry	Fine chemical industry
	Building industry	Water treatment	Other

PROCESS REQUIREMENTS - If possible, send us a sketch of the required installation.

System implementation	Indoor	Outdoor
Operating temperature	-20°/+40°	Other
Height available in mm.		

Selected model

1- Big bag unloading

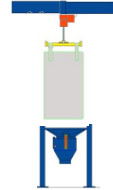
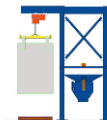
Big bag and sack unloading

2-Loading :

Forklift

Hoist

Low structure only



3-Big bag opening :

Unlacing

Spike to burst the big bag

4-Containment :

Unlacing cabinet



Telescopic tube with flanging plate



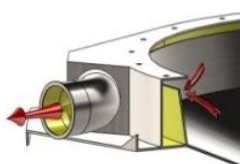
Glove box



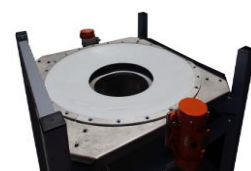
Enclosed system



Dedusting ring



Containment skirt



5-Flowing aid:

High massaging cylinders

Low massaging cylinders

Bag hanger

Stop of the flow: control valve

Rate - bb/h.

Storage hopper integrated

yes

liters

no

Atex

yes*

no

Temperature

Zone

20

21

22

0

1

2

*If Atex zone, please send the corresponding questionnaire.

MANUFACTURING

Support structure

Mild steel

AISI 304L

AISI 316L

Other

**Parts in contact
with the product**

Mild steel

AISI 304L

AISI 316L

Other

BIG BAG CHARACTERISTICS

Big bag with 1 handle

Big bag with 4 handles

Weight of the big bag full - kg

Dimensions big bag with 4 handles - mm

Big bag height

Length

Width

Handle height

Ø of the filling spout

Height of the filling spout

Inner bag

yes

no

Inner bag material

Aluminium

PE

Antistatic liner

yes

no

No cuff / full opening

Dimensions big bag 1 handle - mm

Big bag height

Length

Width

Handle height

Inner bag

yes

no

Inner bag material

Aluminium

PE

Antistatic liner

yes

no

PRODUCTS CHARACTERISTICS

	Product 1		Product 2		Product 3		Product 4	
Designation								
Apparent density kg/m ³								
True density kg/m ³								
Maximum granulometry µm								
Main granulometry µm								
Angle of repose °								
Moisture content %								
Product temperature °C								
Abrasive	yes	no	yes	no	yes	no	yes	no
Toxic	yes	no	yes	no	yes	no	yes	no
Arching	yes	no	yes	no	yes	no	yes	no
Sticky	yes	no	yes	no	yes	no	yes	no
Food product	yes	no	yes	no	yes	no	yes	no
Special characteristics*	yes	no	yes	no	yes	no	yes	no

* If yes, please forward us the Material Safety Data Sheet.

It is very important to give us the maximum information on the products to be treated ; please send us the MSDS or inform us of the danger level/toxicity of the product.

Note: This data is important data for the validation of the adapted system.

ADDITIONAL INFORMATION

Your PALAMATIC PROCESS contact: